



How Do BIRD/WILDLIFE AIRCRAFT STRIKE HAZARDS Affect Your Property?

Bird and wildlife hazards on runways or near flight paths are an important safety concern for the military. A single bird strike by an aircraft can cause catastrophic damage.

What is a Bird/Wildlife Aircraft Strike Hazard?

Bird/Wildlife Aircraft Strike Hazard (BASH) refers to the possible instance of a collision between an animal (usually a bird) and an aircraft. Bird aircraft strikes can cause significant damage to aircraft and, in some cases, may render aircraft completely irreparable. Such damage results in delayed air missions and may result in injury or loss of life to aircrews and passengers. Bird strikes threaten the safety of Youngstown Air Reserve Station (YARS) pilots and the local community and increase operating costs for the installation where they occur. Between 2003 and 2017, there were a total of 72 bird strikes with military aircraft at or near YARS. depend on the type of safety zone.

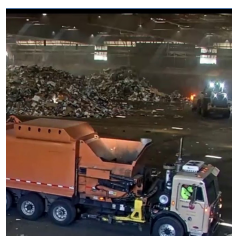
How Does BASH Management Affect Your Property?

The townships, cities and village surrounding YARS regulate certain types of development that may attract birds. These regulations are for properties within the five-statute-mile radius BASH Relevancy Area around the YARS air operations area and apply only to specific uses that are more likely to attract birds and thus generate a bird safety hazard near the airfield. The air operations area encompasses all parts of the airfield where aircraft may operate. The regulations are not likely to affect the average citizen property owner as they apply more to municipal uses than private development.

Incompatible Land Uses within the BASH Relevancy Area



Solid Waste Landfills



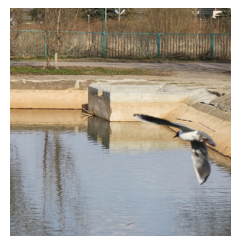
Solid Waste Landfill Transfer Stations
(unless enclosed)



Water Treatment Facilities



Stormwater & Wastewater Treatment Facilities



Associated Settling & Retentions Ponds



Aquaculture
(unless enclosed)





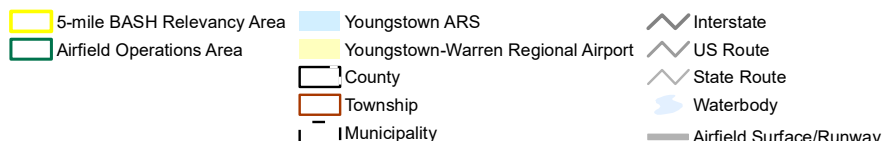
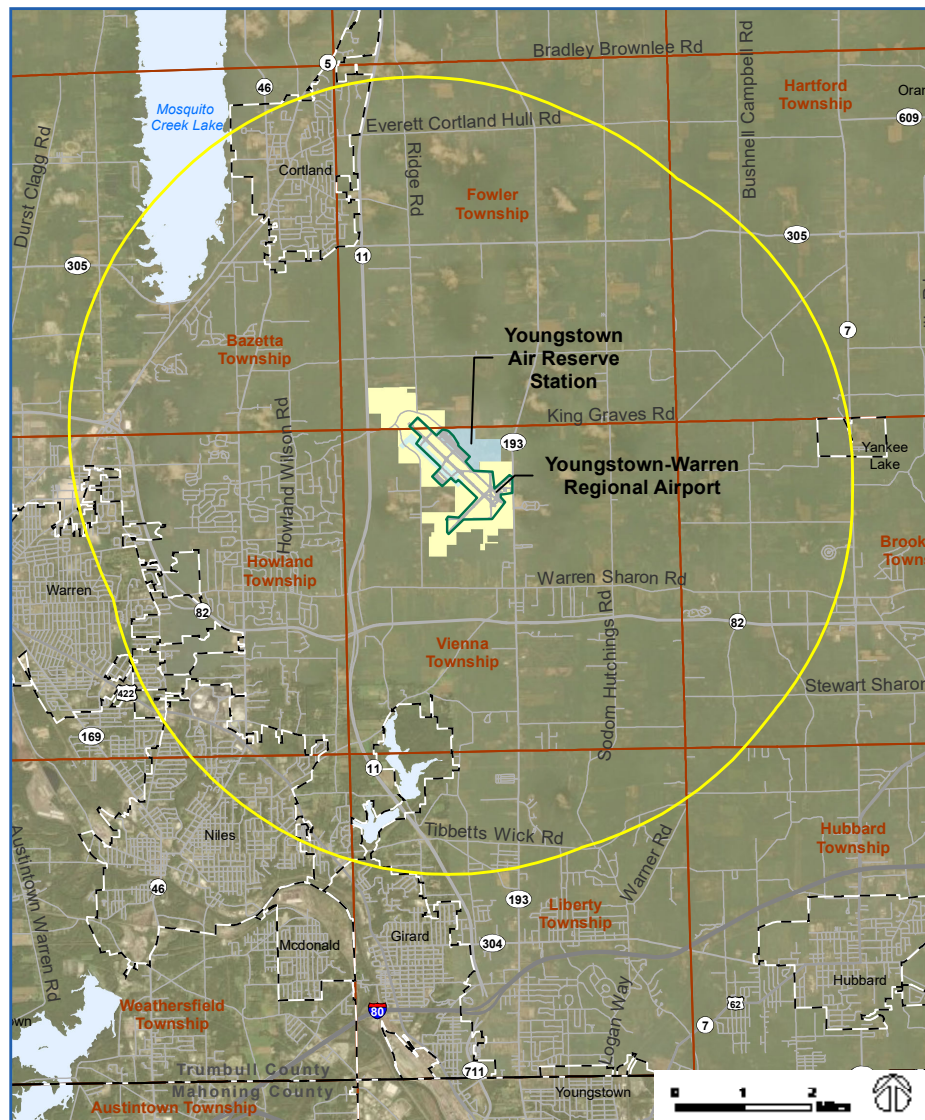
YARS ■ Bird/Wildlife Aircraft Strike Hazard

FAA BASH Guidance

The Federal Aviation Administration (FAA) established BASH Relevancy Area guidance, which identifies a five-statute-mile area surrounding an airfield that the FAA has determined to be where BASH incidences are most likely to occur. Operations occurring in this area are typically at slower speeds and lower altitudes, resulting in a greater chance for a BASH incident.

YARS BASH Management

YARS maintains a BASH program and Bird Hazard Working Group to address wildlife hazards around runways through proactive mitigation relative to resident bird and wildlife species. Extra precautions are taken during March through May and August through October when bird activity is increased. Knowing where birds travel, nest, and feed helps the Working Group identify problem areas and reduce strike risks. The BASH program also establishes protocols to work with local stakeholders to avoid actions that could increase BASH incidents.



You Can Help

If you own property within the BASH Relevancy Area, consider whether new development or activity may attract birds. Certain types of land use and water features — feed lots, horse stables, grain crops, waste disposal operations, golf course water traps, wetlands and water bodies have greater potential to attract birds and wildlife. Keeping them sanitary and installing bird-repelling devices such as netting or life-like scarecrows, predator decoys, and riprap around larger open water features such as golf course water traps and stormwater detention ponds reduce bird activity.

**For More
Information
Contact:**



Trumbull County Planning Commission

185 E. Market Street NE, Suite A, Warren, Ohio 44481

Phone: (330) 675-2480

www.planning.co.trumbull.oh.us



Rev. 03 07 2023